

State of Wyoming Corner Record

(In compliance with the **CORNER PERPETUATION AND FILING ACT**, Wyoming Statutes, 1997 Section 33-29-140 et. se., and the Rules and Regulations of the Board of Professional Engineers and Professional Land Surveyors)

Reverse side of this form may be used if more space is needed.

Record of original survey and citation of source of historical information (if corner is lost or obliterated). Description of corner monumentation evidence found and/or monument and accessories established to perpetuate the location of this corner. Sketch of relative location of monument, accessories, and reference points with course and distance to adjacent corner(s) (if determined in this survey). Method and rationale for re-establishment of lost or obliterated corner.

RECORD: G. L. O. survey J. W. Hammond in 1873: "80.00 chs, set 16x10x4 Sandstone 11 inches deep, marked 5 notches on west and 1 notch on east"

FOUND: no evidence of stone.

Re-monumentation: By single proportion, set 2.5" aluminum cap on 5/8x24" rebar, cap is 0.1ft above ground, set T-Post 1.0 east.

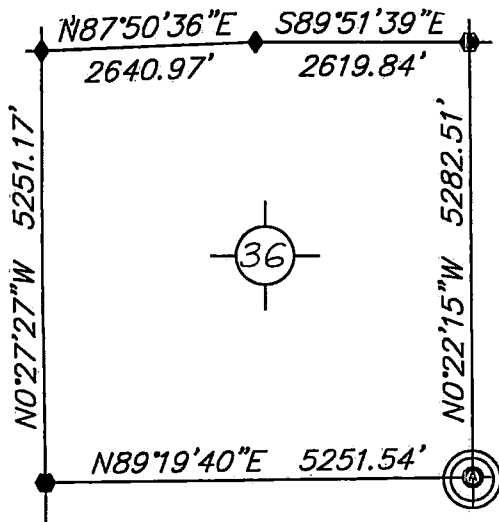
	Point #	North	East	Elev.
NAD83, position:	1761022	357462.92	934534.78	5113.36

NOTE: After extensive work in this township I found many corner stones moved & wired to fences in low areas. There is minimal section control!

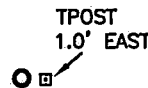
NOTE: BEARINGS AND DISTANCES SHOWN HEREON ARE BASED UPON GRID USING NAD83 WYOMING EAST ZONE AND TRIMBLE R8 GPS OBSERVATION

Monument Location

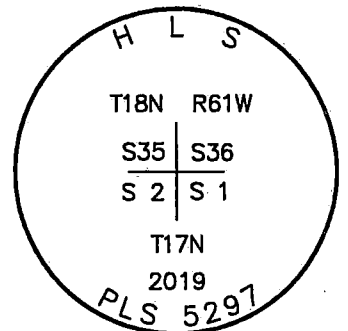
corner referenced this record =



SKETCH



LARAMIE COUNTY



Monument Inscription

Date of Field Work: May 11, 2019

Office Reference: DRG-21848, Pt.1761022

Cross Index Plat

	1	2	3	4	5	6	7	8	9	10	11	12	13	14	15	16	17	18	19	20	21	22	23	24	25		
A																											B
B		6																									C
C			5																								D
D				4																							E
E					3																						F
F						2																					G
G							1																				H
H																											I
I																											J
J																											K
K																											L
L																											M
M																											N
N																											O
O																											P
P																											Q
Q																											R
R																											S
S																											T
T																											U
U																											V
V																											W
W																											X
X																											Y
Y																											Z
Z																											

Firm/Agency, Address

this corner record provided by:

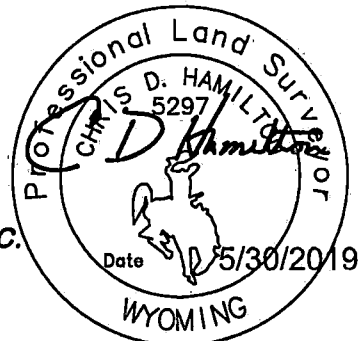
**HAMILTON
LAND
SURVEYING**

UNDER CONTRACT TO:



RIFFIN & ASSOCIATES, INC.
1414 ELK ST., SUITE 202
ROCK SPRINGS, WY 82901
(307) 362-5028

This corner record was prepared by me or under my direction and supervision.
SEAL & SIGNATURE



T. RECP #: 754735
O. RECORDED 6/7/2019 AT 1:55 PM BK# 2624 PG# 783
a. Debra K. Lee, CLERK OF LARAMIE COUNTY, WY PAGE 1 OF 1

Debra Lee
County Clerk Deputy

STATE of WYOMING, Office of Clerk & Recorder, County of Laramie
this block provided for county filing documentation

Corner Name: Southwest , Section: 36 , T 18N , R 61W , 6th P.M. , Cross-Index No.: Z-21

SBRPEPLS/PLSW: March 1994; PLSW January 1998

County: LARAMIE , Wyoming